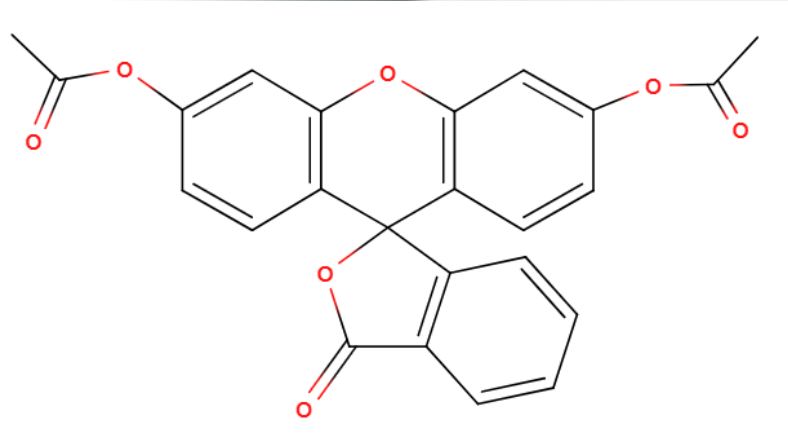


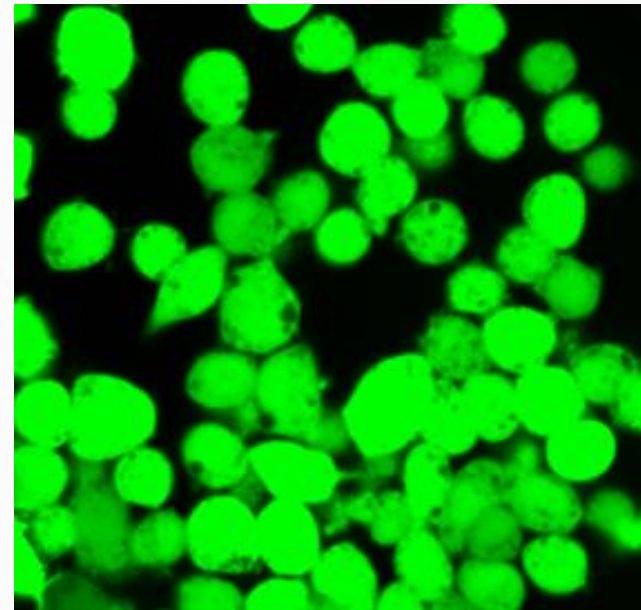
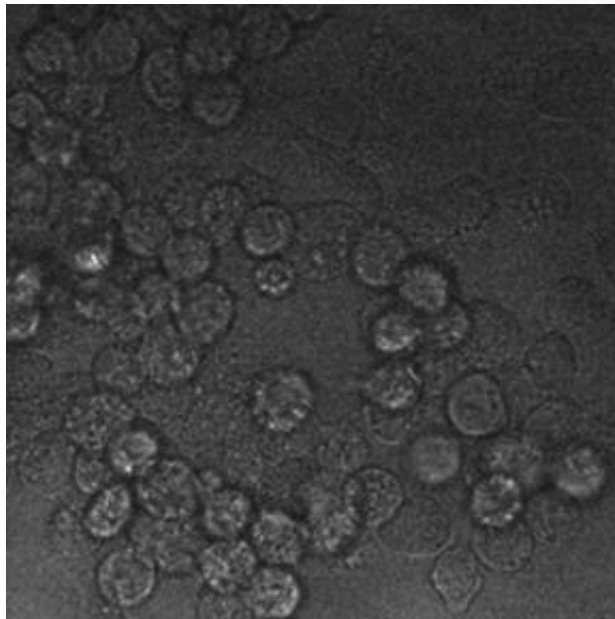
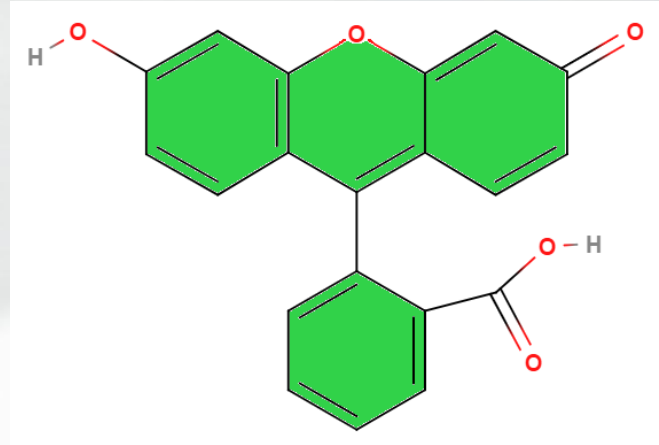
Bacterial Water Analysis with the Accellix

Method:

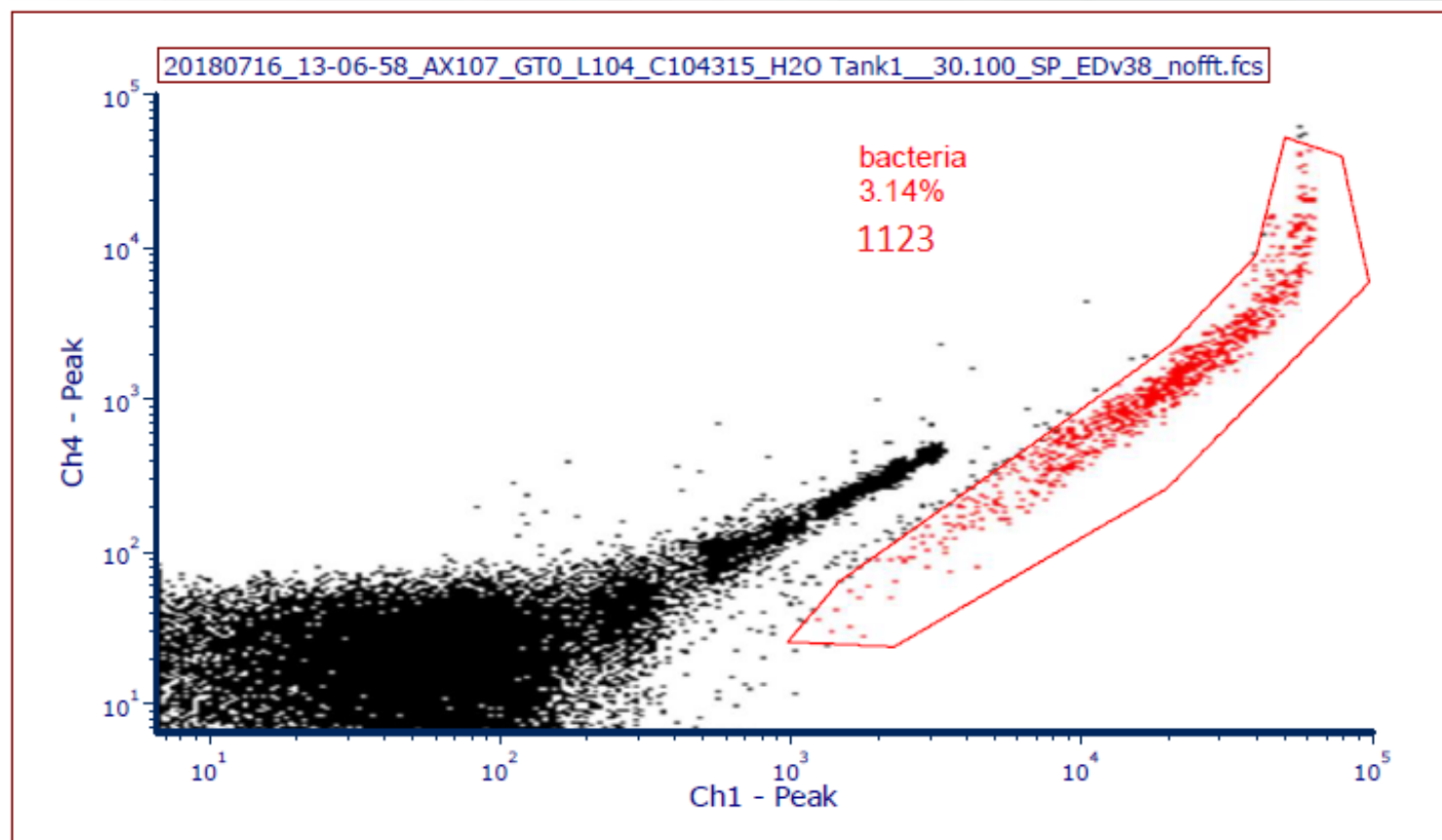
1. 400 μ l buffer/diluent into 4 ml tube
2. 100 μ l Water sample
3. 5 μ l Fluorescein diacetate esterase stain
4. Vortex and incubate away from light 30 min
5. Pipette 250 μ l into Accellix cartridge and Run
6. Dot Plots with manual gating



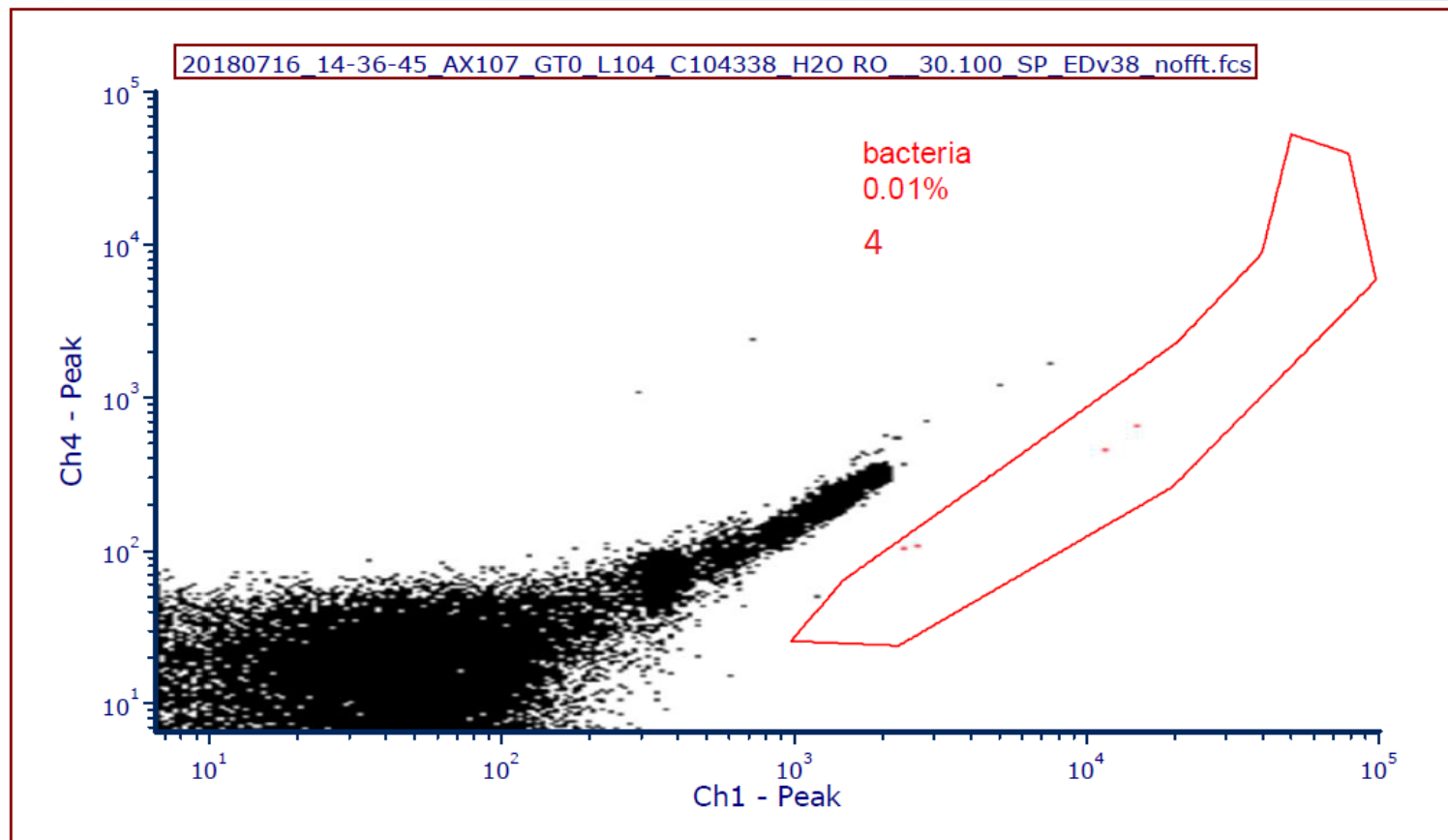
➔
Esterases



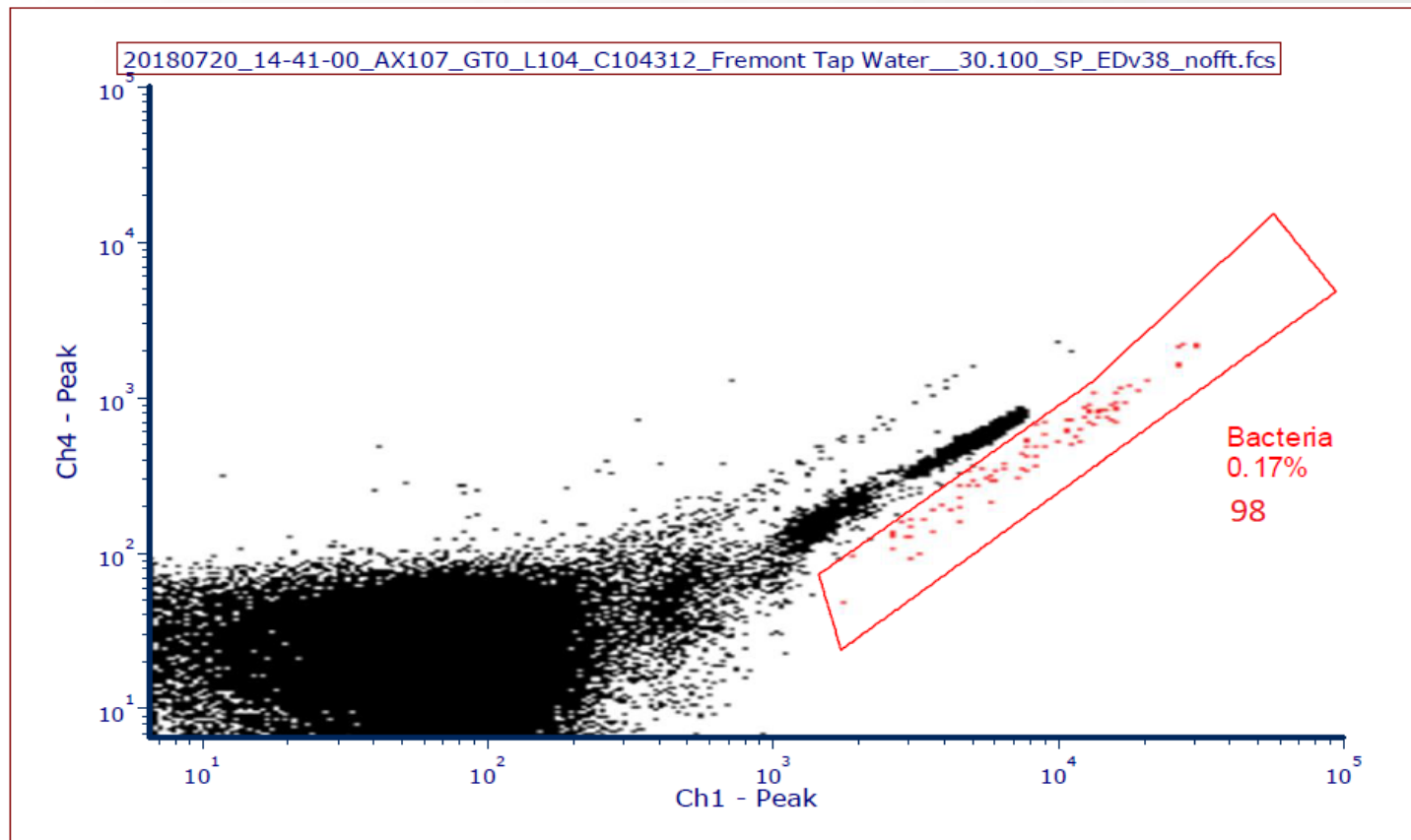
Rainwater Catchment



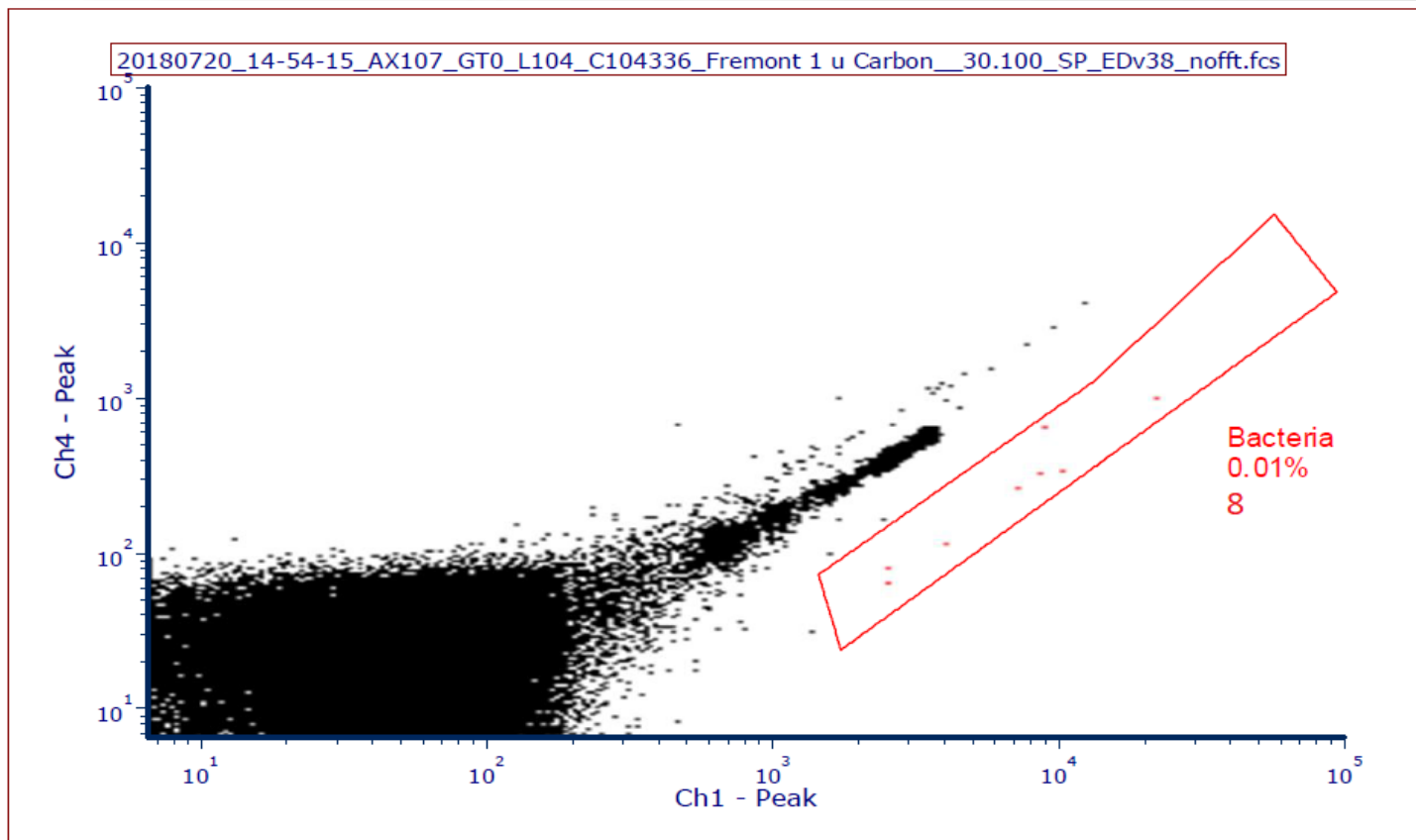
Post Filter: Reverse Osmosis

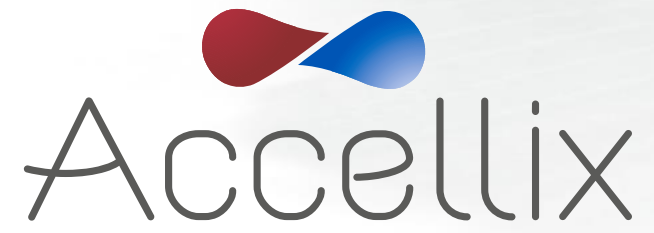


Municipal Tap Water: Unfiltered



Municipal Tap Water: 1 μ Carbon Filtered





In Real Time to make a Difference