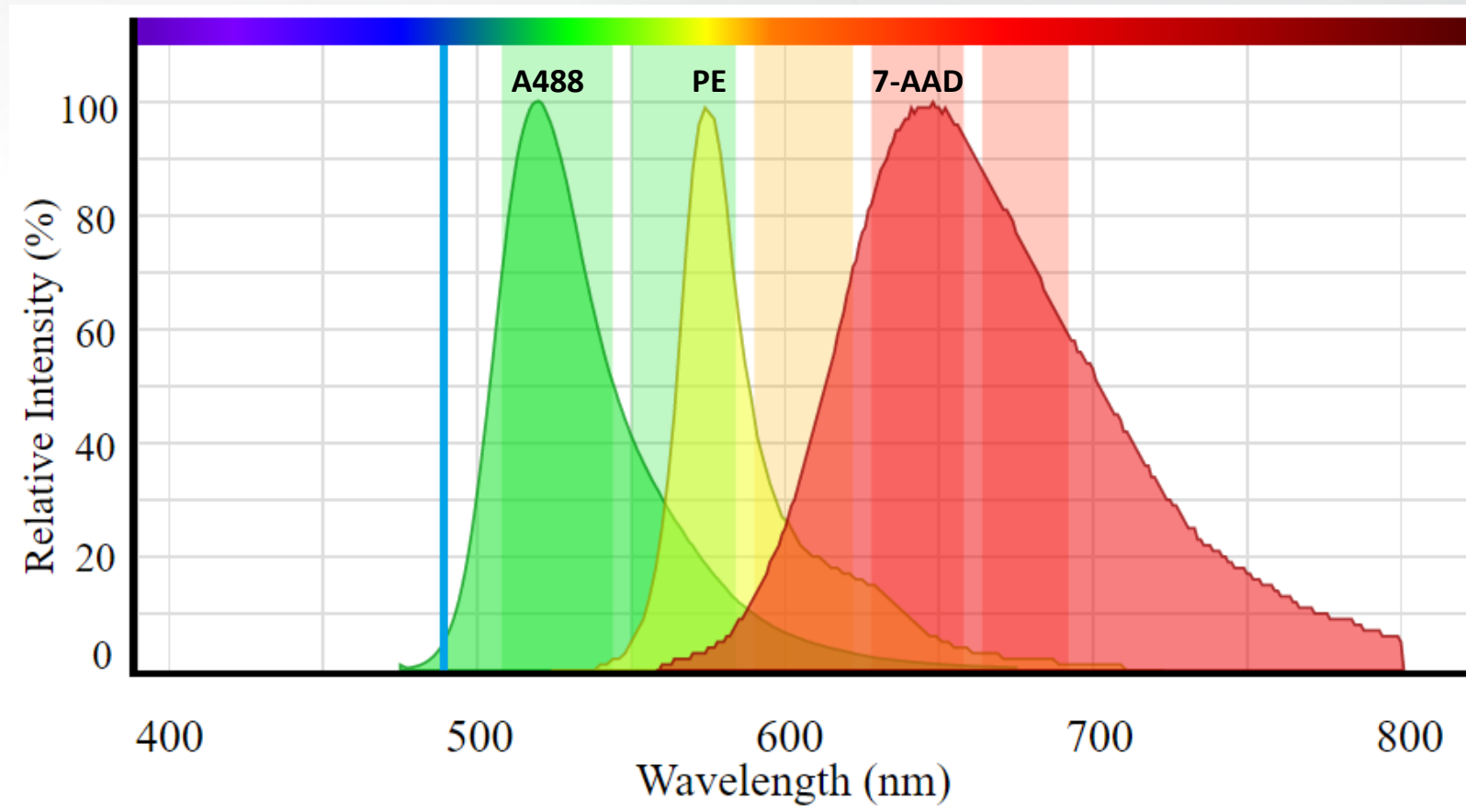


Accellix Stem Cell Panel

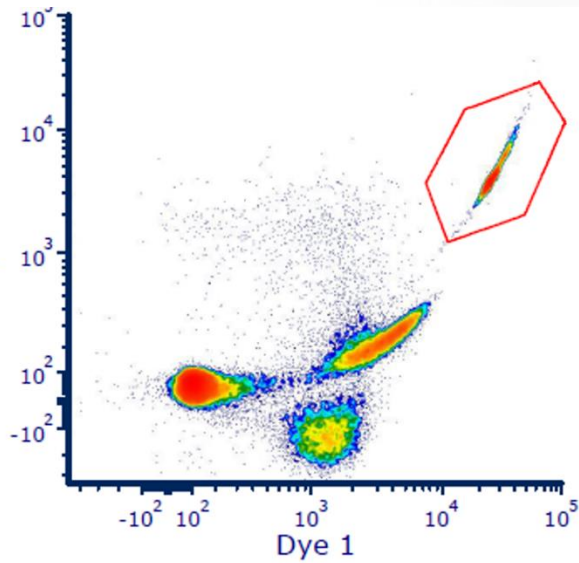
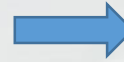


Alexa 488	anti CD45
PE	anti-CD34
7-AAD	dead cell stain

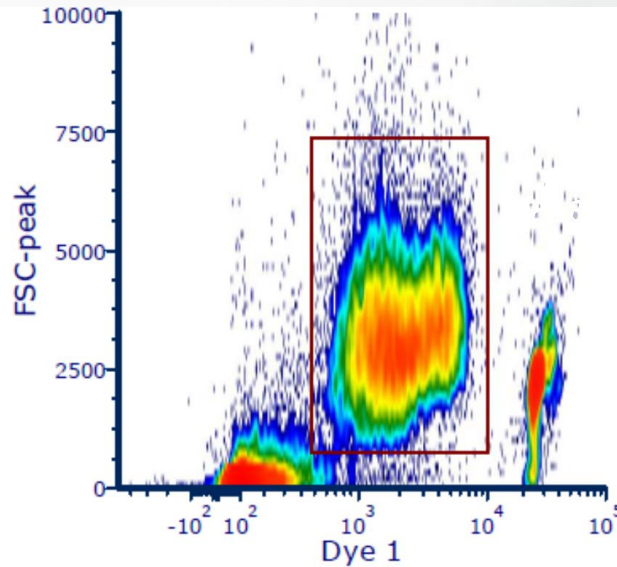
Developed using ISHAGE reagent formulation of antiCD45-FITC, antiCD34-PE, 7-AAD, and counting beads.

Accellix Stem Cell Panel

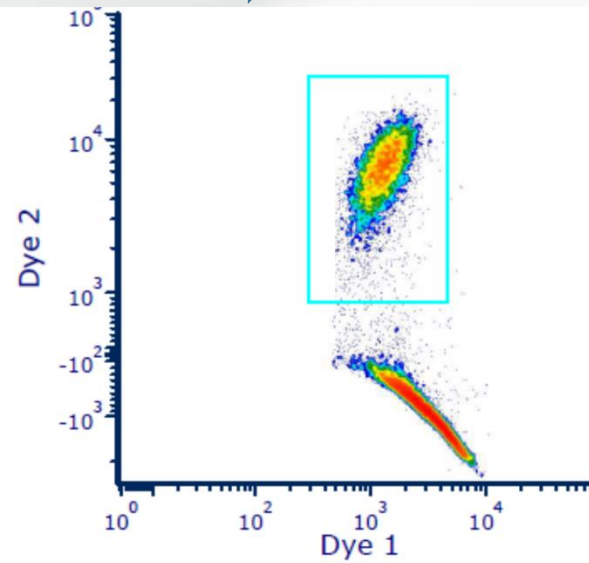
Gate CD45



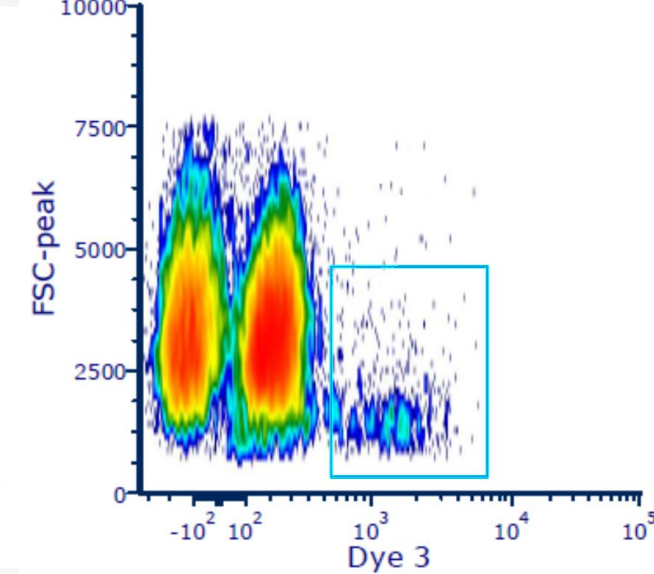
Counting Bead determination from all events



CD45+ determination from all events



CD34+ determination from CD45+ cells



Dead cell determination from CD45+ Cells